

## 7. STORAGE AND CARE

- Clean and disinfect the carrying system and pneumatic components manually using a cloth moistened with cleaning and disinfecting solution
  - Recommended cleaning and disinfecting materials:
  - Sekusept: cleaning and disinfecting agent - Incidur: disinfecting agent
- Products other than the recommended cleaning and disinfecting agents are not tested and may damage the equipment.
- Remove all cleaning and disinfecting solution using a cloth moistened with water.
- Dry all components using a cloth.
- DO NOT exceed 30°C for washing and rinsing and 60°C for drying.
- DO NOT immerse in cleaning solutions or water.
- Extend the neck strap and, if fitted, the waist belt. Store in a cool, dry environment, free from dust and dirt, in a location where it is not subject to wear or damage due to abrasion.

## 8. DISCLAIMER

- Failure to adhere to the instructions supplied with the equipment may invalidate any claims with respect to damage, death or injury due to the misuse or malfunctioning of the apparatus.

## WARNINGS

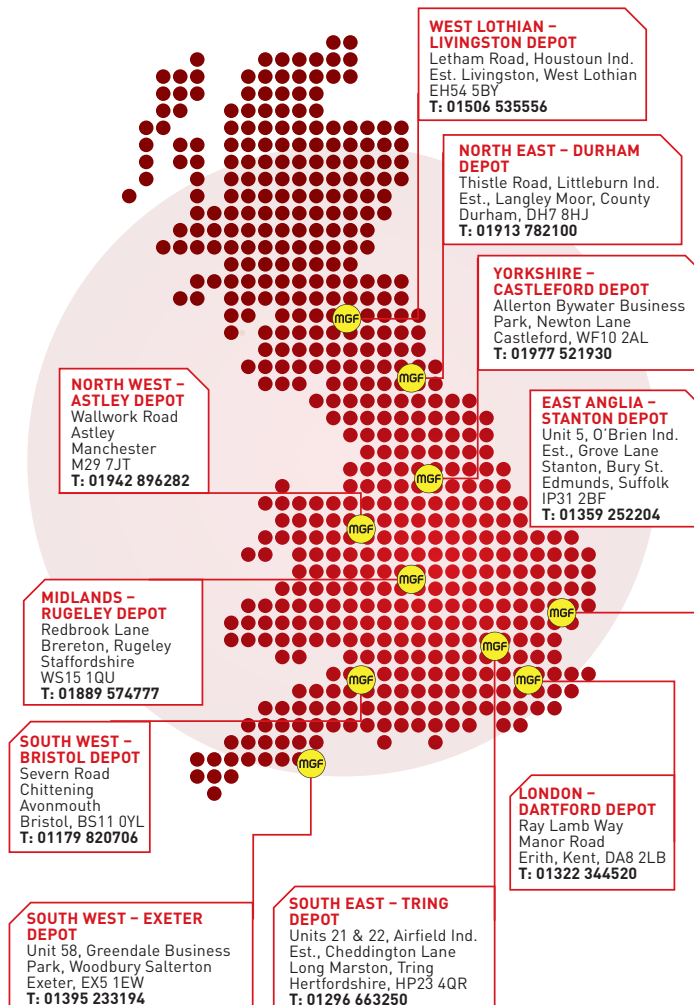
- **DO NOT** - open the equipment except in an emergency.
- **NEVER** - attempt any maintenance. Once apparatus has been used it must be returned to MGF for maintenance and servicing.
- **ENSURE** - the wearer is able to reach the required area before the air cylinder is empty. **NOTE** the actual breathing time available from the cylinder depends on the wearer's air-use rate. Higher breathing rates associated with increased physical effort would reduce the available escape time.
- **DO NOT** - exceed the operating temperature range of -15°C to 60°C.
- **The air cylinder used with this product must be a certified Dräger cylinder; otherwise the operation of the product may be impaired.**

mgf.co.uk



**HEAD OFFICE**  
GRANT HOUSE  
LOCKETT ROAD  
ASHTON IN  
MAKERFIELD  
WIGAN  
WN4 8DE

**ENGINEERING CENTRE**  
FOUNDATION HOUSE  
WALLWORK ROAD  
ASTLEY  
MANCHESTER  
M29 7JT



mgf.co.uk

enquiries@mgf.co.uk

0808 163 7672



## USER GUIDE: DRÄGER PP10 AND PP15 ESCAPE SETS FOR USE IN CONFINED SPACES



**PLEASE READ & UNDERSTAND THIS USER GUIDE  
PRIOR TO COMPILING A SAFE SYSTEM OF WORK  
AND USING THE EQUIPMENT SUPPLIED**

For the latest version of this document visit [mgf.co.uk](http://mgf.co.uk)



## 1. IMPORTANT NOTES

- For the use of MGF supplied equipment only.
- Ensure potential users are confined spaces trained, familiar with the operation of this equipment and that a site specific safe system of work is in place and adhered to.
- Users should comply with the Confined Spaces Regulations 1997 and HSE ACOP L101 (2009).
- It is essential site specific risk assessments are undertaken.
- If in doubt concerning the integrity of any part of the equipment DO NOT USE IT.
- DO NOT open the equipment except in an emergency.
- The Dräger PP series conforms to EN 402:2003 and ISO 23269-1:2008 and meets the requirements of 89/98/EEC, 97/23/EC, 96/98/EC and is 'CE' marked. (Use real 'CE' marking)

## 2. DRAGER PP10 AND PP15 EMERGENCY ESCAPE SETS

- You have been provided with a Dräger PP10 or PP15 emergency escape breathing set that provides respiratory protection to escape from a contaminated or oxygen deficient environment to a safe breathing environment.
- The respiratory protection equipment is contained within a carry bag complete with a neck strap.
- The air cylinder is fitted inside the carrying bag but has a pressure gauge (Figure 1) that is visible outside the bag.
- The PP series comes complete with a face mask to supply air to the wearer.
- The PP10 version has a 2 litre aluminium cylinder with a nominal duration of 10 minutes and the PP15 version has a 3 litre steel cylinder with a nominal duration of 15 minutes.
- Ensure that the time required to allow the wearer to escape to a safe area is within the capacity of the equipment and that the equipment supplied is suitable for the job in hand.

## 3. MGF VISUAL INSPECTION/FUNCTIONAL TEST

- All Dräger emergency escape sets supplied by MGF are subject to a 6 monthly thorough visual inspection or functional test on an alternate basis by competent, Dräger trained and approved technicians.
- Air cylinders are removed from service every 5 years in order to be hydrostatically tested.
- Control valves are replaced every 10 years.
- Using one hand hold the mask on to the face and,

- MGF use only Dräger approved parts for maintenance and servicing of emergency escape sets.

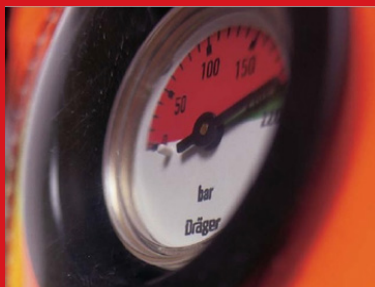


Figure 1

## 4. VISUAL INSPECTION - PRIOR TO USE

- MGF recommend that the Dräger PP10 emergency escape sets are inspected by the user prior to every use. As a minimum check that:
  - The pointer of the cylinder pressure gauge (Figure 1) is inside the green area. The cylinder should be returned to MGF for charging if the pointer is in the red area. Very low temperatures may affect this reading.
  - Check the anti-tamper tag on the lid of the bag (Figure 2). If the tag is broken please inform MGF and do not use the equipment.
  - Check escape equipment for signs of any damage or wear and if damage is evident please inform MGF.



Figure 2

## 5. INSTRUCTIONS FOR USE

- Your Dräger PP10 or PP15 emergency escape set has been supplied ready for use.
- Putting on the carrying bag: Place the neck strap over the head and adjust the strap until the equipment sits in the centre of the chest.
- Putting on the face mask and escape procedure: Grip the loop on the lid of the carrying bag and pull firmly upward to break the anti-tamper tag and open the lid of the bag.
- Remove the mask from the carrying bag.

- with the other hand, pull the elasticated head harness over the back of the head, locating the harness centrally on the head.
- Tighten both lower straps evenly towards back of head.
- On achieving a face seal, inhale to activate the breathing air supply. The duration of the cylinder air begins from the time of the first-breath activation of the lung demand valve.
- Breathe normally and immediately leave the hazardous area by the shortest and safest escape route.
- Once in a safe breathing environment, carefully remove the face mask. DO NOT drop or throw down the equipment.



Figure 3

- Press the reset button on the front of the mask to switch off the air flow through the lung demand valve.
- NOTE - Correct fit of the face mask can only be achieved if the complete mask seal contacts the skin. Head hair, facial hair, earrings, other piercings and normal spectacles will interfere with the face mask seal and are not permitted in the sealing area.

## 6. AFTER USE

- Once an emergency escape set has been used please return it to MGF for disinfecting, servicing, maintenance and to have the cylinder recharged.